

## Honor & Certificate

- National High-Tech Enterprise
- 2010 Shanghai World Expo Exhibitor
- Government Recognized LED lighting Demonstration Project Enterprise



## Company Introduction

- Brand: To be Top Brand in LED lighting industry
- Marketing: To be largest company in China LED lighting industry.
- Industry Positioning: To be No.1 Professional manufacturer.

Shenzhen MIC Optoelectronic Co.,Ltd established in 2005, is Shenzhen TOP Brand and National Hi-tech enterprise which specializes in developing, manufacturing and marketing of LED products, we design and manufacture LED products such as led street light, led flood light, led traffic light, led tube, led panel light, led corn light, led high bay, led bulb, led down lights and other led lights. MIC is one of the largest manufacturers and exporters of LED lighting in China.

We take the lead to pass the authorization and audit of ISO9001 Quality System and ISO14001 Environment Management System in semiconductor lighting industry in China and our LED lighting products have been awarded with certificates from national, provincial, municipal, authoritative organizations. Some products including LED street light, led flood light, led high bay, led tubes have been passed for CE, ROHS, UL, SABS, ETL etc certificates.

Since the establishment of our own brand "MIC", with strong research and development capability, professional technical team and substantial experience in the industry, we launch new products beyond the customers' expectation every year, which always lead development trend in the industry. With dominant market share in China, our marketing network has been extended to over 150 countries and regions including Europe, America, Oceania, Africa, Southeast Asia, the middle east and Japan, With distinctive competence and numbers of successful lighting projects in the world, we gain praise-worthy reputation and have been widely recognized by customers domestically and globally.





## Company Product

- Power saving over than 70%
- 5-7 days for sample,7-10 days for orders
- Paypal,TT, LC are available for payment
- High quality with competitive price
- 24 Hours online service,technical support lifetime



**High Power LED Street Light**

MSL-A48/A96/A144/A192...  
Model No: MSL-K42/K56/K70/K84...  
MSL-E20/E24/E28/E60...  
Input Voltage: AC85-265V,50-60Hz  
LED Luminous Efficiency: 107-122lm/W  
Certificate: CE,ROHS,UL  
Lifetime: >50,000Hours  
Warranty time: 3 or 5 years



**High Power LED Flood Light**

MFL-B10/B20/B30/B50  
Model No: MFL-B70/B80/B100/B120  
MFL-B150/B200...  
Input Voltage: AC85-265V,50-60Hz  
LED Luminous Efficiency: 107-122lm/W  
Certificate: CE,ROHS,UL  
Lifetime: >50,000Hours  
Warranty time: 3 years



**High Power LED Traffic Light**

200mm/300mm traffic light  
Model No: Pedestrian light, countdown timer  
solar traffic light, controller  
Input Voltage: AC85-265V,50-60Hz  
External Material: PC housing & ABS  
Certificate: CE,ROHS  
Lifetime: >50,000Hours  
Warranty time: 2 years



**High Power LED TUBE Light**

MDG-T8210A MDG-T8315A...  
Model No: MDG-T8418A MDG-T8526A...  
MDG-T8414B MDG-T8418B...  
Input Voltage: AC85-265V,50-60Hz  
LED Luminous Efficiency: 90-100lm/W  
Certificate: CE,ROHS,UL  
Lifetime: >50,000Hours  
Warranty time: 3 years



**High Power LED Panel Light**

MPL-Q303-20, MPL-Q606-43...  
Model No: MPL-R180-12, MPL-R240-18...  
MPL-S160-12, MPL-S210-12...  
Input Voltage: AC85-265V,50-60Hz  
CRI: >85%  
Certificate: CE,ROHS,UL, SAA  
Lifetime: >50,000Hours  
Warranty time: 3 years



**High Power LED Corn Light**

MYM-3/6/7/9/12/15/18  
Model No: MYM-20/30/40/50/60/80  
Light Base: E27/E26/E40/E39/G24  
Input Voltage: AC100-300V,50-60Hz  
Beam Angle: 360 degree  
Light Source: Epistar SMD3528  
Lifetime: >50,000Hours  
Warranty time: 2 years



**High Power LED Bulb Light**

MBL-3w,5w,9w,11w  
Model No: MBL-24W,32W,42W  
MBL-72W,140W  
Input Voltage: AC85-265V,50-60Hz  
LED Luminous Efficiency: 90-100lm/W  
Certificate: CE,ROHS,UL  
Lifetime: >50,000Hours  
Warranty time: 3 years



**High Power LED High Bay**

MHB-B30,B50,B80,B100  
Model No: MHB-B120,B150,B200,B300...  
Beam Angle: 45 degree or 120 degree  
Input Voltage: AC85-265V,50-60Hz  
LED Luminous Efficiency: 107-122lm/W  
Certificate: CE,ROHS  
Lifetime: >50,000Hours  
Warranty time: 3 years

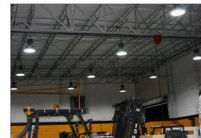
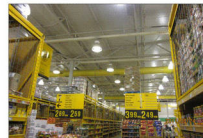
## Project Case

- Offer full technical specifications
- Complete solutions for your detail projects
- Numbers of project cases for study
- Analysis of power saving when using led lights
- Excellence after-sale service, get feedback information in every week.

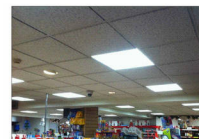
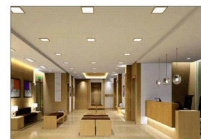
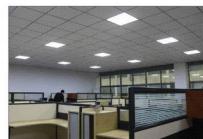
### MIC LED Street Light Project



### MIC LED High Bay Light Project



### MIC LED Panel Light Project



### MIC LED Tube Light Project



### MIC LED Flood Light Project

